



**Aluminium extrusion solutions -
innovative and with the highest precision**



Location Area Vienna



A-3100 St. Pölten
Porschestraße 23a



Facts and Figures



Foundation

1997 → **SINCE 29 YEARS**

Owner

Ing. Franz Sterkl

Legal form

Limited Liability Company | Family Business

Business model

Engineering & Trading

Production partners

100 % Europe (EU-Player)

Target market

DACH region (Germany, Austria, Switzerland)

Revenue

approx. 25 million euros

Annual volume

approx. 4,000 tons of profiles & components



Infinite design possibilities

AFC



IT'S ALL ABOUT THE BEST SOLUTION.
That is our mission.

Business Units



TECHNOLOGIES

- Extrusion
- Machining
- Assembly production
- Surface Technology



SERVICES

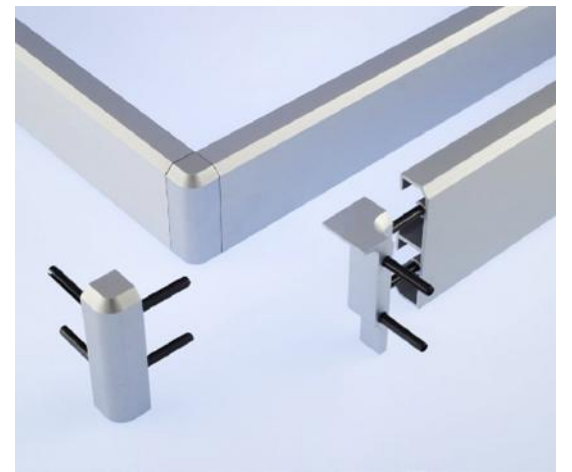
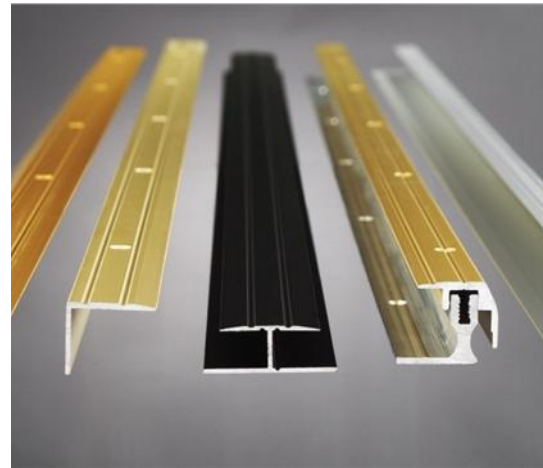
- Profile-Design & Engineering
- Packaging, Storage & Logistics
- Matching
- Hedging

Construction

AFC

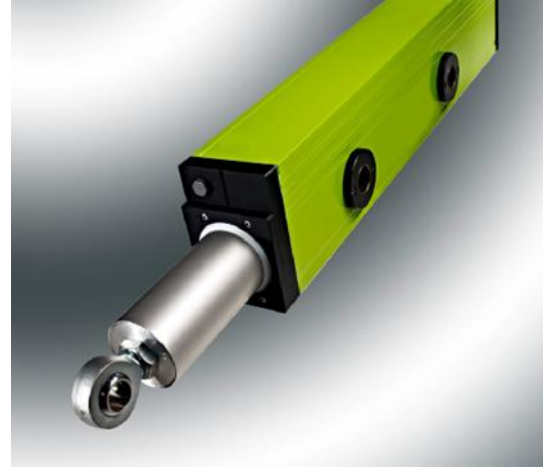


Interior

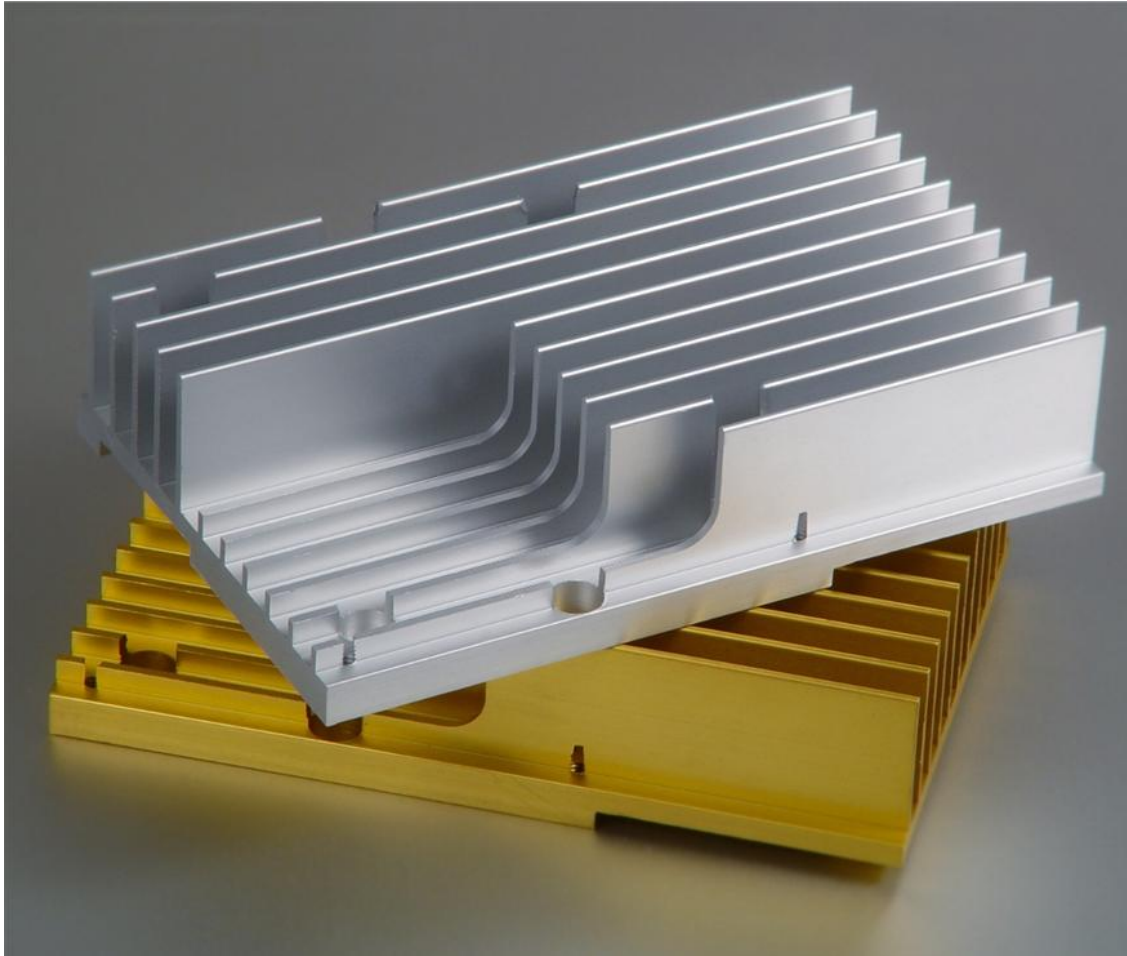


Industry

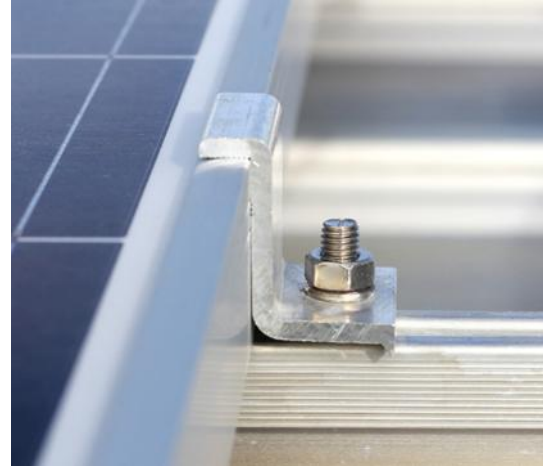
AFC



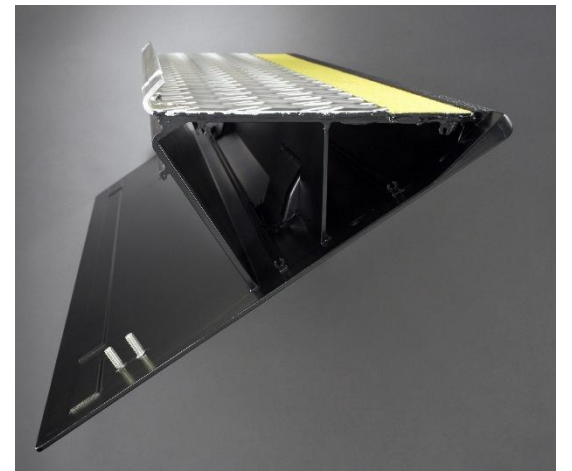
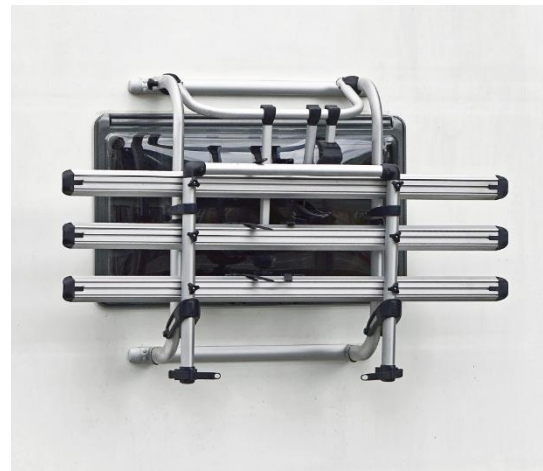
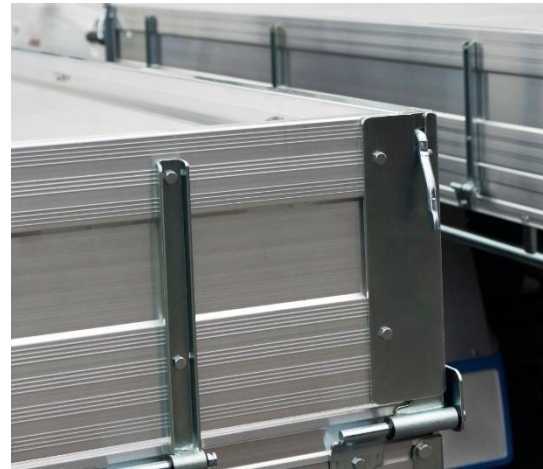
Electronics



Solar



Transport



Unique production network and performance portfolio

Best price/performance ratio in Europe thanks to:

- Location Cost Advantages in a Low-Cost Area
- Tailor-made selected production plant
- Top AFC customer service on site



55

Extrusion presses



150

Processing machines



120

Surface treatment lines



Team



Ing. Franz Sterkl
Management



Viktoria Stöber, MA
Management
Marketing & Organization



Ing. Maximilian Sterkl, MA
Management
Sales & Engineering



Bettina Baldauf
Key Account Manager



Cornelia Gruber
Finance



Nora Eder, MA
Key Account Manager



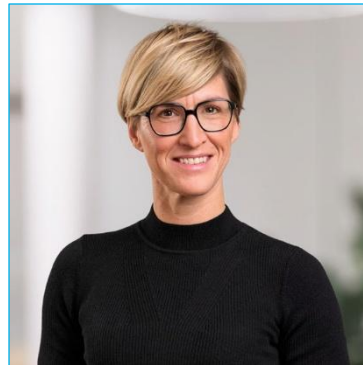
Ing. Josef Hieger
Key Account Manager



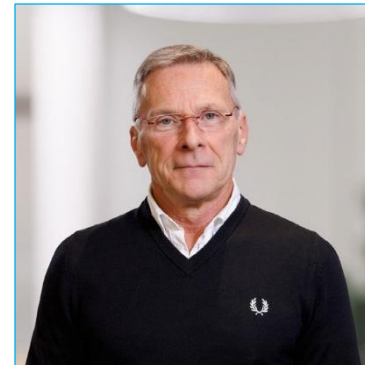
Matthias Weingast, MSc
Key Account Manager



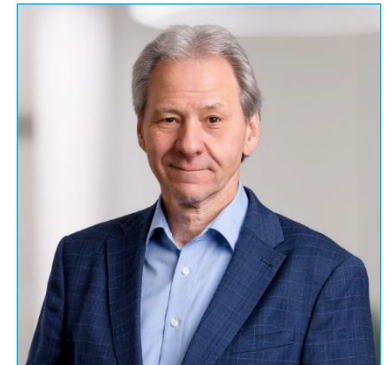
Günther Zerlauth
Key Account Manager



Sabine Brack, BA
Key Account Manager



Christian Walter
IT-Manager



Ing. Walter Kalcher
Quality Management (ext)

Sustainability – Our 5 pillars

#1 SUSTAINABLE PRODUCT ENGINEERING

#2 LOW-CARBON & RECYCLING-ALUMINIUM

#3 CORPORATE CARBON FOOTPRINT

#4 CORPORATE SOCIAL RESPONSIBILITY

#5 CO2 ROAD MAP 2050 WITH PRODUCTION PARTNERS

Low-Carbon & Recycling Aluminium

Overview of the carbon footprint

kg CO ₂ e / kg aluminium profile	Material	Scrap content	Certification
 1,4 *	 ALU FUTURE COMPONENTS	98%	 INTERNATIONAL EPD SYSTEM
 2,3 *	 ALU FUTURE COMPONENTS	75%	 INTERNATIONAL EPD SYSTEM
 6,7	∅ Europe	no data	—
 15,0	∅ Global	no data	—

* Calculation “cradle to gate”, life cycle analysis LCA: Al–A3 modules, using the cut-off method, in accordance with ISO 14025 and EN 15804.

Social Responsibility

We are guided by the UN's Sustainable Development Goals. In particular, the following **Sustainable Development Goals**:



Your benefits at a glance

#1 COMPLETE SOLUTION FROM A SINGLE SOURCE

#2 EXCLUSIVE PRODUCTION NETWORK

#3 OPTIMAL PRICE-PERFORMANCE RATIO

#4 REGIONAL PRODUCTION IN EUROPE

#5 SUSTAINABLE FAMILY BUSINESS

Thank you for your attention.

